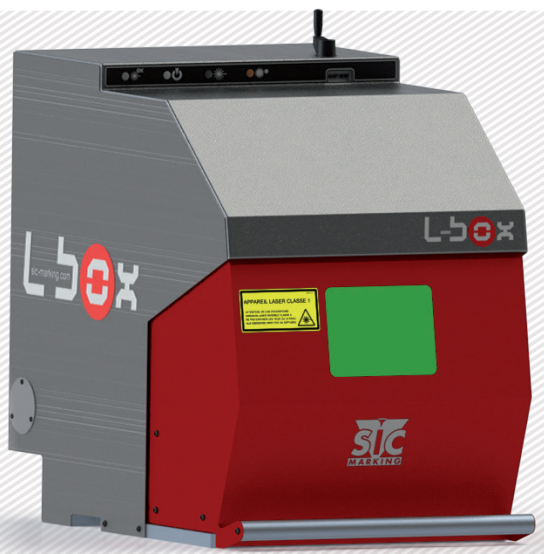


L-BOX LASER MARKING WORKSTATION



+ FIBER LASER

- SIC Marking Fiber laser sources doped with Ytterbium
- 1D or 2D codes (Data Matrix) marking
- Fast and high quality marking

+ USER-FRIENDLY

- Ergonomic door: soft opening
- Access the marking zone from 3 sides
- Large viewing window
- Reduced width for improved ease of use

+ ROBUSTNESS AND RELIABILITY

- Long-life components ($\geq 100\,000$ h)
- Reduced maintenance
- 2 years warranty (5 years optional)

+ SECURITY

- Class 1 security laser (EN 60825-1 standard)

AVAILABLE CONFIGURATIONS

Easy 20-30W

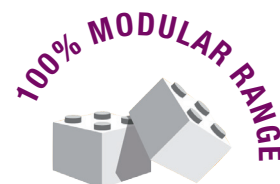
Excellent value for money
Marking on all types of materials and difficult surface conditions

LG 50W

Deep marking
Ultra fast marking

HD 20W

Multi material (ideal for aluminums and plastics...)
Reduced cycle time



VERSATILITY

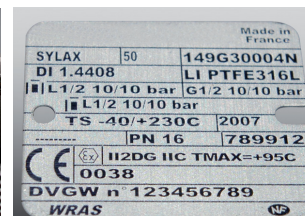


HIGH POWER



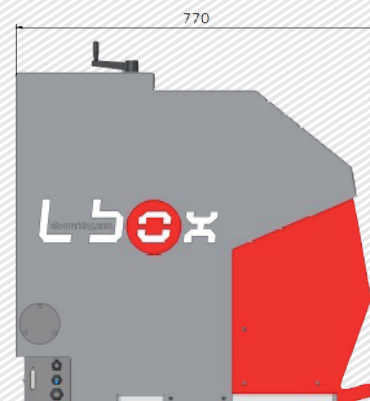
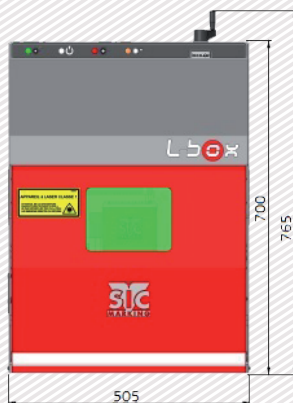
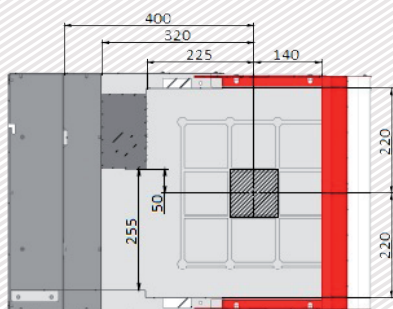
HIGH CONTRAST

LASER MARKING SAMPLES



MECHANICAL FEATURES

L-BOX	
Marking window	<input type="checkbox"/> 100 mm <input type="checkbox"/> 170 mm (others consult us)
External dimensions	505 x 770 x 765 mm
Marked parts Dimensions	Max height: 223 mm - Max length: 440 mm
Lighting	LEDs on the work area
Working distance adjustment	Manual or motorized column with counter and laser pointers
Security	Class 1 security laser (EN 60825-1 standard)
Software	SIC Laser Software



THE FIBER UNIT

- Operating method: pulsed (variable frequency)
- Ultra Compact: 4U height (177mm)
- Consumption: 750 W
- Wavelength: 1 064 nm
- Cooling: by air only
- Warranty: 2 years (5 years optional)
- Communication cards (optional):



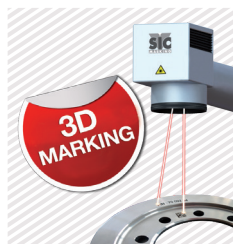
- + USB interface, Windows environment
- + Laser driven by «SIC LASER» software

- + Digital axis control (linear and rotary)
- + Self diagnostic function
- + User-friendly interface with icons navigation

MODULARITY: ACCESSORIES AVAILABLE AT ANY TIME *(Consult us)*



Integrated Vision System



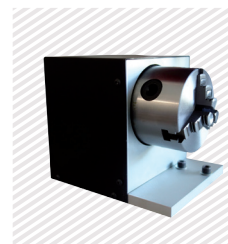
3D Marking



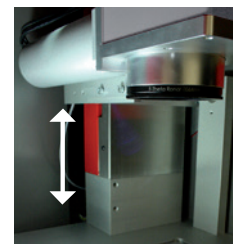
Full chassis



Extraction and filtration systems



Divider axis



Motorized Z axis