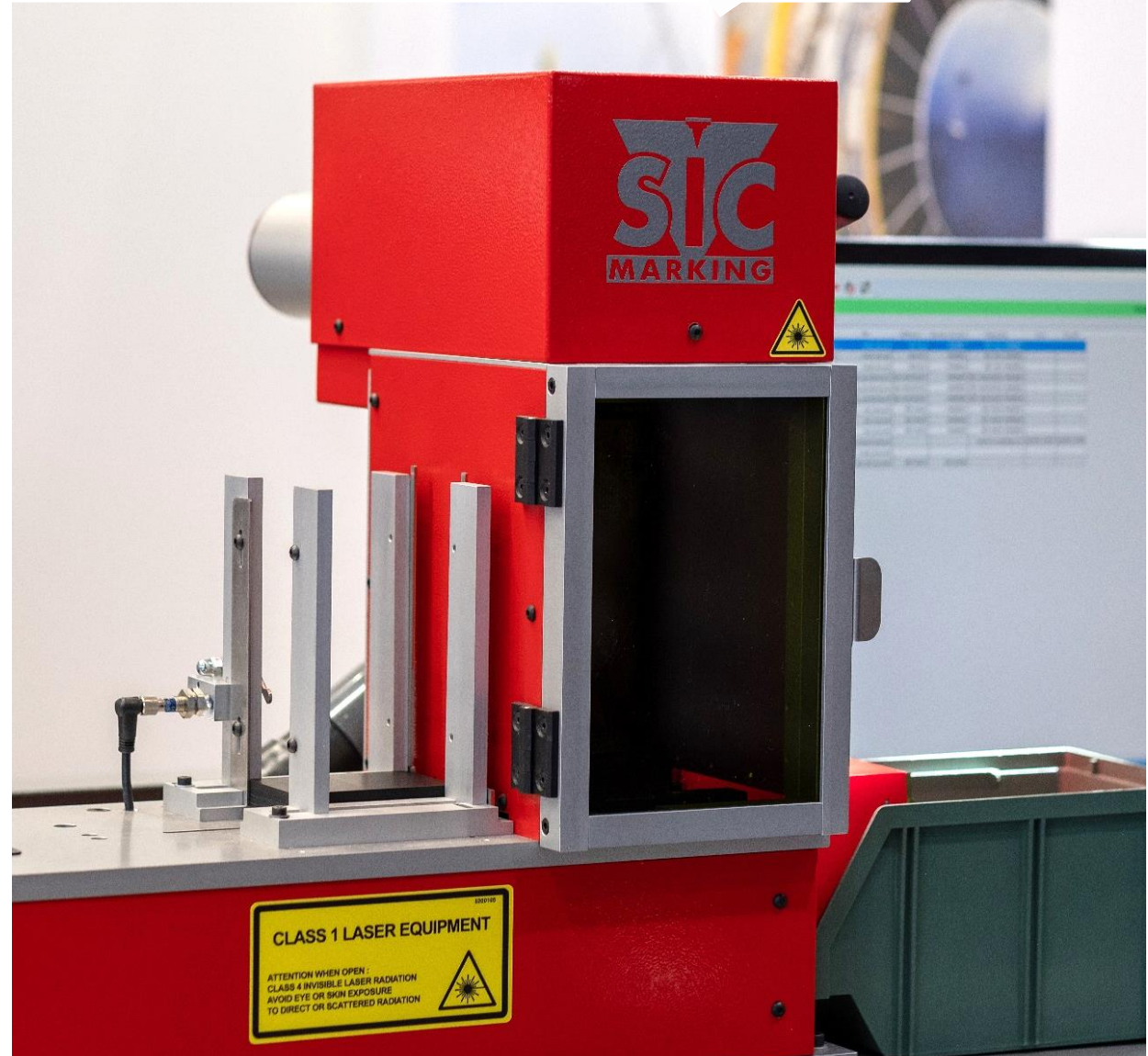




**LASER MARKING
WORKSTATION
WITH AUTOMATIC
TAGFEEDER**

-  **ALL IN ONE**
-  **AUTOMATED**
-  **VERSATILE**

TAGMARK LASER

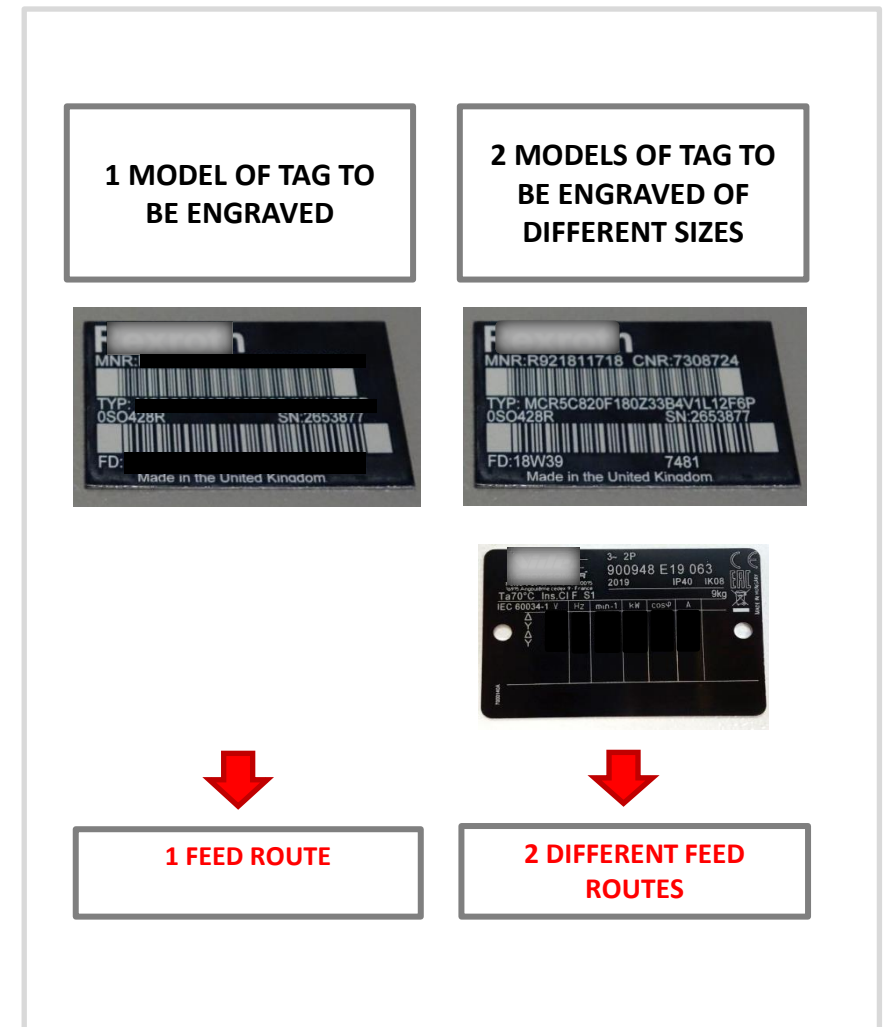
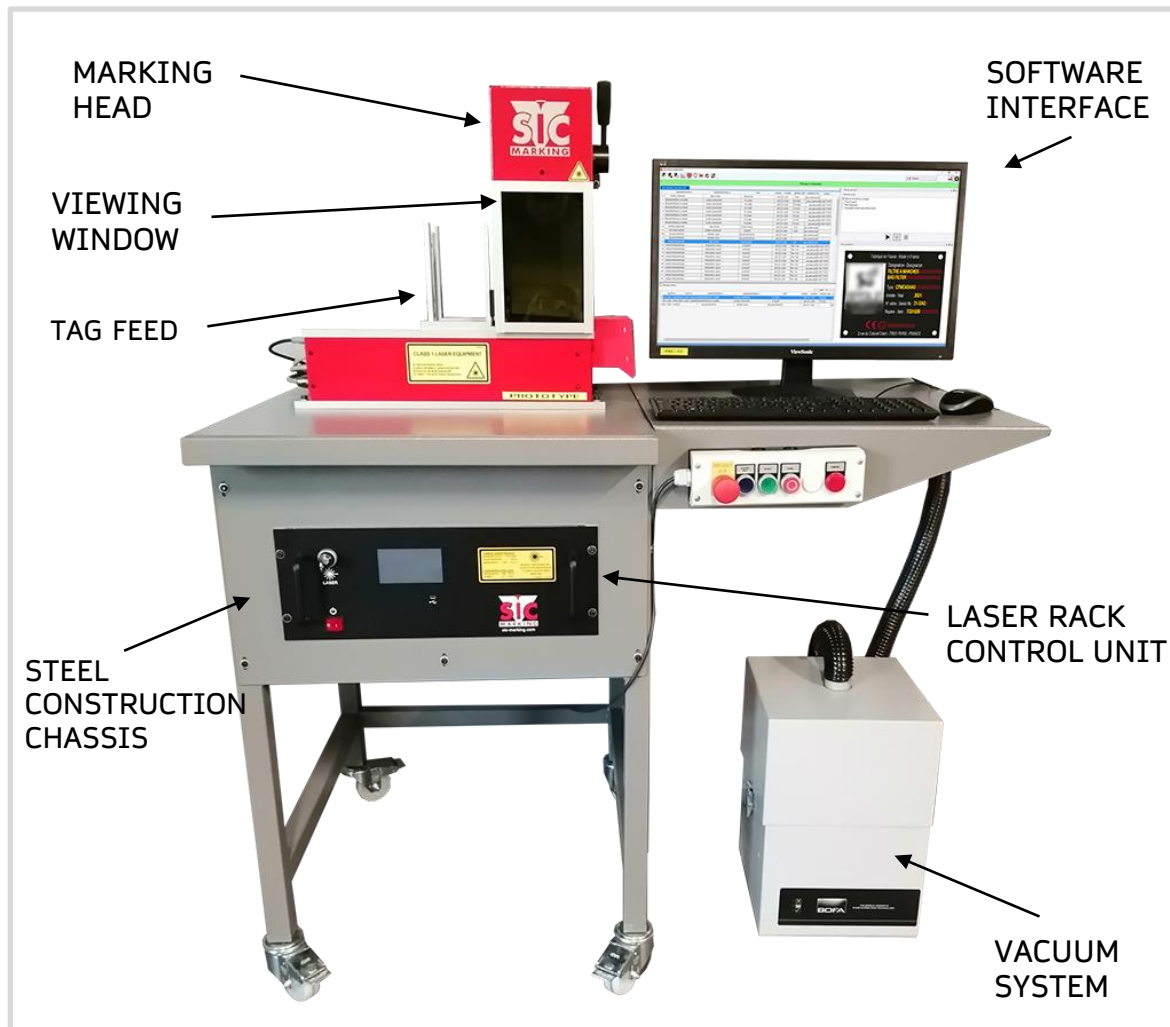


***PRODUCTIVITY & SAFETY IN THE WORKSHOP
FOR TAG MARKING***

TAGMARK LASER OVERVIEW



The TAGMARK LASER is a complete automated system that will allow you to simultaneously manage the supply and marking of your tags, on a single workstation, secure and synchronized with your own data.





The tags feed can therefore be done via one or two routes if you have two different sizes of plates.

Tag specifications*

N. Of routes \ Tags dim.	Minimum width (mm)	Max width (mm)	Minimum length (mm)	Max length (mm)
1 route	12	100	30	100
2 routes	12	Up to 170 mm**	30	170

** The combined width of the two tags should not exceed 170 mm

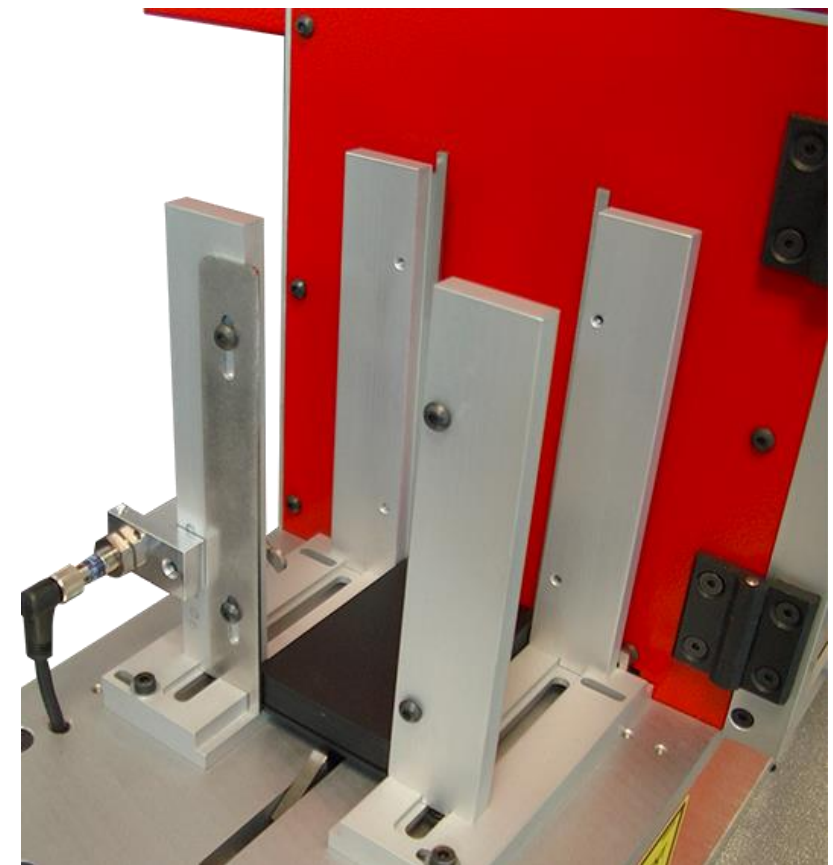
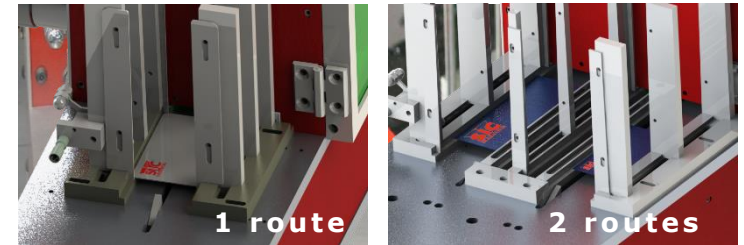
Tags thickness: 0.5 to 2 mm

Burr-free and non-greasy tags without protective film

Loading rack*

The standard stacking height is 150 mm.

***OTHER DIMENSIONS AND FEATURES CAN BE DESIGNED AND MANUFACTURED ON REQUEST.**





Tags are marked in series and automatically, without the need for an operator. The marking can also be done individually if desired.

Laser specifications

The TAGMARK LASER is equipped with an i104 EASY laser machine with a 20W fibre laser source. Other powers are available for deeper marking or higher speed.



+ TECHNOLOGY & DESIGN

- Operating method: pulsed (variable frequency)
- Consumption: 750 W
- Wavelength: 1 064 nm
- Digital axis control (linear and rotary)
- Ultra Compact: 4U height (177mm)

+ COMMUNICATION CARDS (optional)

+ RELIABILITY AND PERFORMANCE

- Long-life components ($\geq 100\ 000$ h)
- Self diagnosis function
- Cooling: by air only
- Warranty: 2 years (5 years optional)

+ OPERATING

- Laser driven by «SIC LASER» software
- USB interface, Windows environment
- User-friendly interface with icons navigation



Marking area

The laser marking area is secured in a Class 1 certified enclosure.

The enclosure is equipped with a viewing window.

Case of unit marking

Unit marking is quite possible, especially if :

- you wish to mark a tag whose dimensions do not correspond to those of the tag supply
- you have a one-off marking to do

In this case :

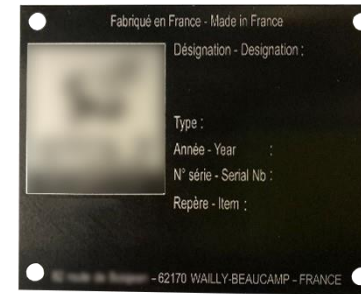
- a specific support allows the precise placement of the tag in the enclosure
- a handle allows the laser beam to be adjusted to the appropriate height





The software interface has been designed for easy TAGMARK LASER configuration and use. In the chosen language, the HMI manages your different marking needs according to your user profile. It remains customizable beyond the predefined cycles and keeps the history of your data.

Example of an engraving plate :



MARKING FILES →

FILE HISTORY →

The screenshot displays the software interface with the following components:

- Tableau de bord (Dashboard):** Includes a language selector set to 'Français' and a 'Prêt pour l'exécution' (Ready for execution) status bar.
- Tableau de données (Data Table):** A table with columns: DESIGNATIONFR L1, DESIGNATIONGB L2, TYPE, ANNEE, N°SERIE, REPERE-ITEM, MARKING FILE, and varatex. It lists various marking tasks such as 'FILTRE A POCHE', 'TRANSPORTEUR A CHAÎNE', 'ECLUSE ROTATIVE', and 'VANNE PNEUMATIQUE'.
- Tableau de prévisualisation (Pre-visualization):** A panel on the right showing a simulated marking on a tag. It includes a 'Mode du cycle' section with options like 'Reprise manuelle sur passage' and 'Test mécanique'. Below it, a 'Prévisualisation' section shows a tag with the engraved text: 'Fabriqué en France - Made in France', 'Désignation - Designation: TRANSPORTEUR A CHAÎNE CHAIN CONVEYOR', 'Type: TC C/950', 'Année - Year: 2021', 'N° série - Serial No: 21-2232', 'Repère - Item: TC0102B', and 'Ex II 3D T135°C'.
- Tableau de l'historique de marquage (Marking History):** A table at the bottom showing a list of marking operations with columns for StartTime, EndTime, DESIGNATIONFR L1, DESIGNATIONGB L2, TYPE, ANNEE, N°SERIE, and REPERE-ITEM.

← USER PROFILE CHOICE

← PREDEFINED CYCLES

← PRE-VISUALISATION OF THE MARKING ON THE TAG



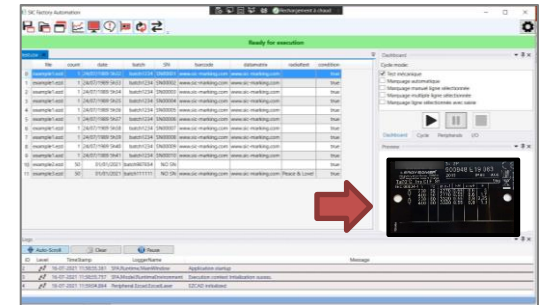
Quick and easy import of your marking data

- The transfer of your marking data between your source files and the TAGMARK LASER software interface is quick and easy. These files can be stored on your network or on the PC that hosts the software interface.
- The imported marking data are : mask choice, variables, tag quantities.
- File selection and data entry is possible by 1D or 2D barcode reader.
- Database formats: "csv", "xlsx" or "xls". On request, the interface to your SQL database can be developed.

Live view of your marking mask



← Blank plate as input.
Scanned, the software instantly displays it with your marking data.
THIS AVOIDS ANY ERROR IN ASSIGNING DATA TO AN INAPPROPRIATE FIELD.



Choice of usage mode to suit the user profile

The TAG MAN LASER has three use modes.

- The **CONFIGURATOR MODE** which allows the start-up of the equipment as well as the customisation of certain advanced parameters.
- An **ADVANCED OPERATOR MODE** which allows the modification of the marking criteria : marking file, variables and quantities of tags to be engraved.
- An **OPERATOR MODE** that starts the marking process.

Marking cycles customisation

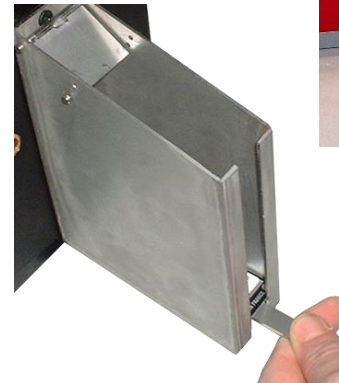
In CONFIGURATOR MODE, it is possible to customise the marking cycle, in particular the cycle triggering and tag detection.



Recovery of engraved tags at output

After marking, the tags are disposed of in a collecting tray.

AS AN OPTION, WE OFFER A GRAVITY COLLECTION SYSTEM THAT ALLOWS FOR AN ORDERLY STACKING OF THE TAGS.



Vacuuming

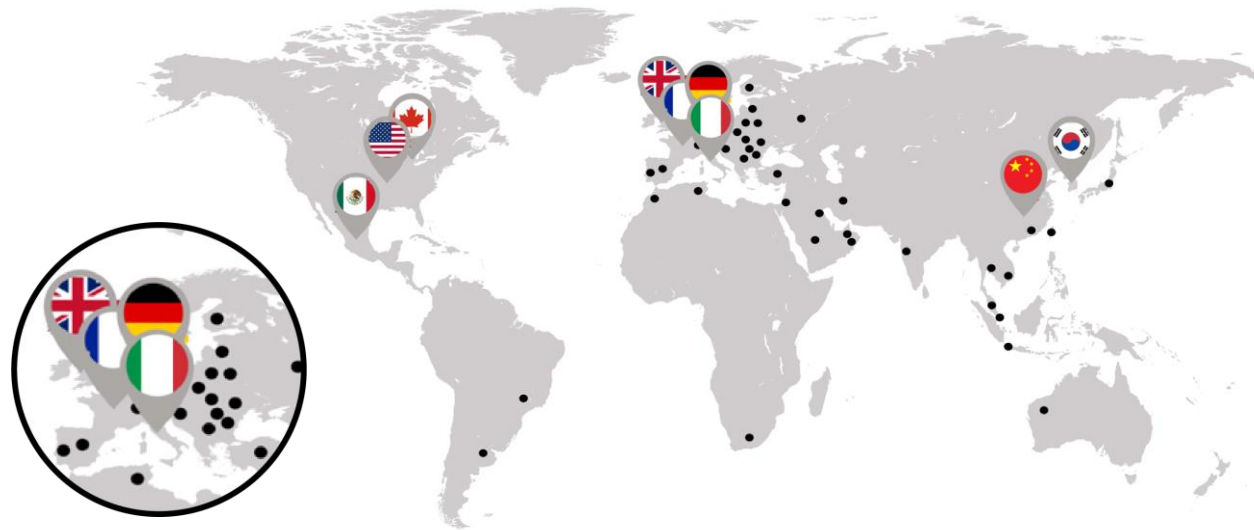


To guarantee optimal and long-lasting operation of the TAGMARK LASER, it is SOLD WITH A VACUUM SYSTEM.

Flow rate between 180 m³/h and 330 m³/h.

SIC MARKING
supports its
customers
worldwide.

Don't hesitate to
contact us.



9 subsidiaries ● 40 exclusive distributors

**SIC Marking France
WWHQ**

195 Rue des Vergers
69480 Pommiers France
Tel : +33 (0) 472 54 80 00
info@sic-marking.com
www.sic-marking.fr

SIC Marking UK

B1 Harris Road,
Wedgnoek Industrial Estate,
Warwick, CV34 5JU
UK
Tel : +44 (0) 1926 830372

SIC Marking Germany

Am Bruch 21 - 23
42857 Remscheid
Germany
Tel : +49 (0) 2191 46240-0

SIC Marking Italy

Via Collamarini 9
40138 Bologna
Italy
Tel : +39 (0) 51
6027811

SIC Marking USA

137 Delta Drive
Pittsburgh, PA 15238
USA
Tel : + 1 (877) 742
9133

SIC Marking Canada

35-2, rue De Lauzon
Boucherville Qc J4B 1E7
Canada
Tel : + 1 450 449 9133

SIC Marking Korea

Office # 707, Banpo Technopia,
186, Galmachi-ro, Jungwon-
gu, 13230 Seongnam-si,
Gyeonggi-do, South Korea
Tel: +82 31 731 8400

SIC Marking China

No. 601, No. 4 Building, No.
258 Jinzang Rd. Shanghai
Shanghai 201206
China
Tel : +86 (0) 21 6164 5600
Office in Haerbin, Beijing,
Wuhan, Chongqing &
Guangzhou.

SIC Marking Mexico

Canada #129
Parque Industrial Unidad Nacional
Santa Catarina, N.L CP 66350
Mexico
Tel : +52 (81) 8676 3383
Office in Mexico City

