

# DOT PEEN PORTABLE MARKING SYSTEM e10 p63



## + ULTRA COMPACT

- Handy and balanced
- Ergonomic handle
- Lightweight (3,2 kg - 6.1 lbs)
- Marking window 60 x 25 mm - 2.4 x 1 in

## + POWERFUL

- Fully programmable
- Latest microcontroller generation: ultra fast start and navigation
- History and self diagnostic functions (maintenance, configuration and statistics support)
- e10 SICTOOL Software Suite: file creation and edition from a PC

## + POLYVALENT

- Marking on difficult to access parts
- Marking speed and power
- Precise and accurate guides
- Marking on all types of materials and difficult surface conditions

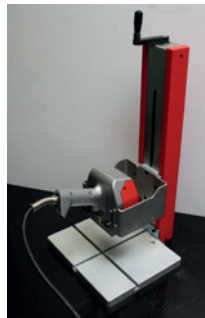
+ Booster Option available

## + ROBUST AND RELIABLE

- Light and robust cast aluminium body and handle



## APPLICATIONS



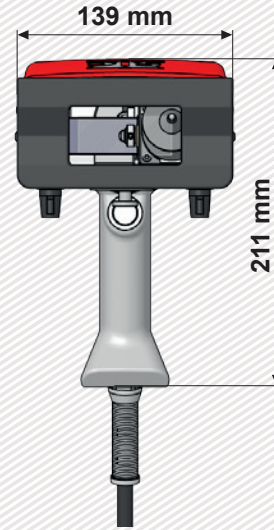
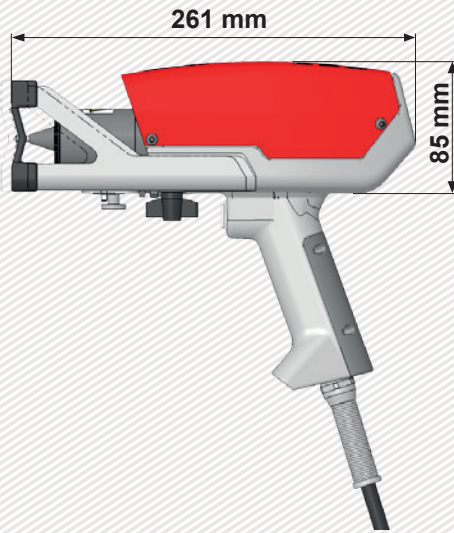
## DOT PEEN MARKING EXAMPLES



# TECHNICAL & MECHANICAL FEATURES

## e10 p63

Marking window	60 x 25 mm - 2.4 x 1 in
External dimensions	139 x 261 x 211 mm - 5.5 x 10.3 x 8.3 in
Weight	3,2 kg - 6.6 lbs
Stylus	Tungsten carbide
Machine / controller cable length	7,5 m - 23 ft (10 m - 32.8 ft and 15 m - 49.2 ft optional)



# OPTIONS



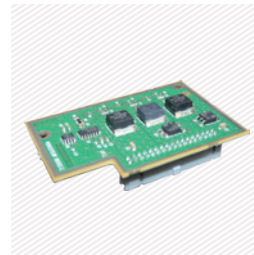
Cart on battery



Hook and balancing system



Column base



Booster card for deep marking



Magnetic front plate



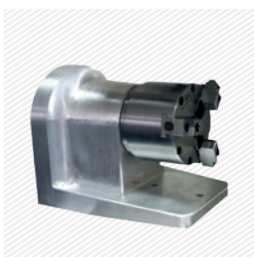
Maintenance kit



Wireless barcode reader



Datamatrix reader



Rotary axis

Please consult us if a specific configuration is not published in the table attached.

SIC Marking designs customized and turnkey solutions for all industrial sectors. Our design offices produce machines in compliance with your specifications and your industrial standards.

# E10 CONTROL UNIT

## The e10 controller

- Color screen
- USB Port: to easily upload / download your marking files
- Fully programmable
- Standalone (no PC needed)
- Membrane protected industrial Keyboard
- IP40 waterproof box (no opening or fan)



+ Multiple connectivities






+ Color screen



+ USB Port

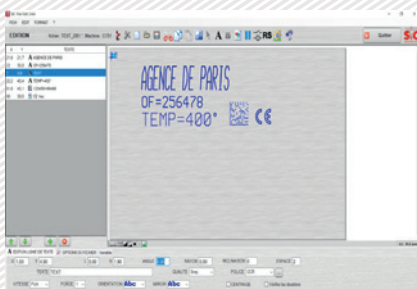


## Technical & electronic features

e10 Controller		Communication	
Dimensions	322 x 380 x 112 mm - 13.7 x 15 x 4.4 in	Communication ports	RS232, RS422, USB, RS485 Profibus, TCP/IP, Ethernet/IP
Weight	5 kg - 11lbs	Inputs-outputs	8/8
LCD screen resolution	480 x 272 pixels	External keyboard input	USB
Keyboard	Qwerty integrated, protected by membrane	PC software	Creation of marking files, transfer controller / PC or USB key
Power	300 Watt	Optional communication cards:	
Power supply	Single phase, 85 to 260 VAC, 50 to 60 Hz	Ethernet TCP	
Controlled axes	2 (optional 3rd / 4th axis card)		 
Operating temperature	From 5 to 40°C		

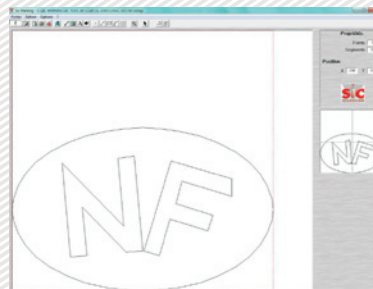
## PC UTILITIES

### File editor



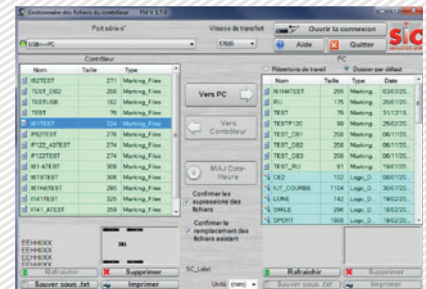
+ Creation or modification of files on PC.

### Creation of logos



+ Creation of vector and matrix logos.

### Creation of logos



+ Backup and file transfer utility.



# E 10 RANGE SOFTWARE

## Software features

Text function	Incrementation, date codes
Logos	Download from a PC or USB key
Datamatrix	Up to 348 characters, 48 x 48 dots
Fonts	Arial, Comic, Comic_B, Courier, OCR, OCR_BOLD, OCRA, 4x6
Style	Angular, Radial, Inverse, and Mirror
Character Size	From 0,1 mm to 99 mm (limited following marking window)
Depth	Up to 0,3 mm (according to the material)
Resolution Between Dots	0,05 mm MAX
Password	2 security levels
History function	Exportable Excel file
Help with maintenance	Auto diagnosis
Available languages	17



Graphic view



Edit menu

AFFECTATION DES I/O		
Num	Entrée	Sortie
1	ARRET	Cycle
2	DEPART	Dernier
3	Sel. Fich	Erreur
4	Sel. Fich	Pause
5	Sel. Fich	Prêt
6	Sel. Fich	PasPièce
7	Sel. Fich	Pièce
8	Sel. Fich	Usure

STATISTIQUES CONTROLEUR	
Déplacements	Mémoire
0 Cycles	33 Fichiers
0 Caractères	17959 o. Utili.
AXE X 0.0 m	46409 o. Libres
AXE Y 0.0 m	27% Utilisées
AXE Z Num. 0.0 m	
Impacts	
F1: 0	F4: 0
F2: 0	F5: 0
F3: 0	F6: 0
F7: 0	F8: 0
F9: 0	

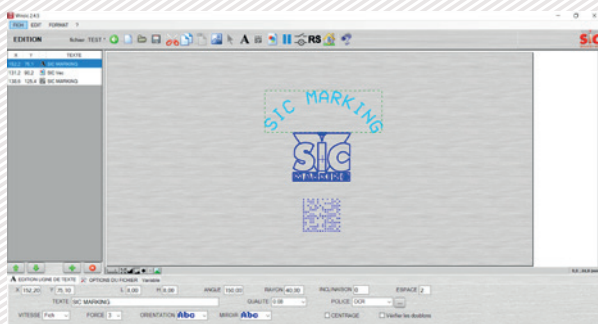
PC software for directly controlling the marking machine.

Available functions:

- Editing of marking files
- Input / output management
- History function and anti duplicates
- Datamatrix ECC200 and UID
- ...

# OPTIONAL WINSIC SOFTWARE

WINSIC is a PC software for direct control of the marking machine.



+ Built-in logo design utility

+ Database Management (Excel, Access, txt)



+ Insertion of background images

