

# DOT PEEN MARKING MACHINE

## e10 c153



### ROBUST AND RELIABLE

- Base in aluminum foundry
- Mechanics and stylus assembly designed for intensive use



### ERGONOMICS AND COMFORT

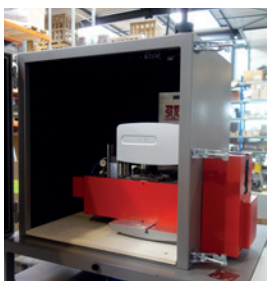
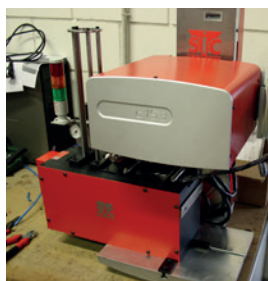
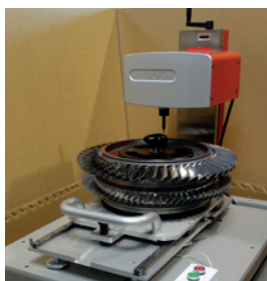
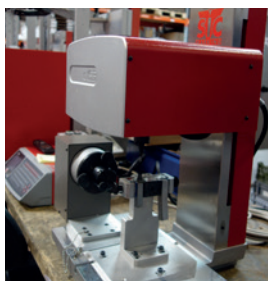
- Counter built into the column to memorize the positions
- LED lighting for visual comfort



### SPEED AND PRECISION

- Up to 3000 parts per day
- Axis accuracy (0,02mm)

## APPLICATIONS

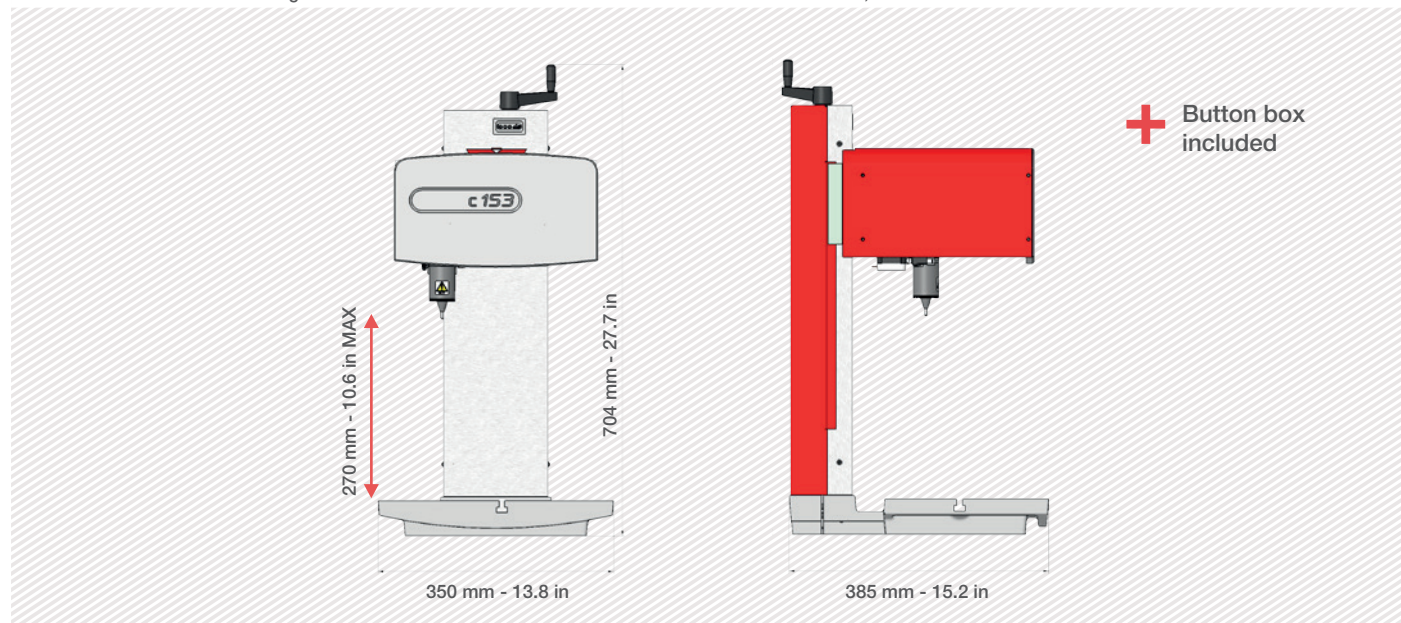


## DOT PEEN MARKING EXAMPLES



# TECHNICAL & MECHANICAL FEATURES

| e10 c153                          |  |
|-----------------------------------|--|
| Marking window                    | 160 x 100 mm - 6.3 in x 3.9 in             |
| External dimensions               | 385 x 350 x 704 mm - 15.2 x 13.8 x 27.7 in |
| Weight                            | 28 kg - 61.7 lbs                           |
| Stylus                            | Tungsten carbide 60 mm - 2.4 in            |
| Column stroke                     | 270 mm - 10.6 in max.                      |
| Machine / controller cable length | 2,5 m - 6.5 ft                             |



## OPTIONS



Rotary axes

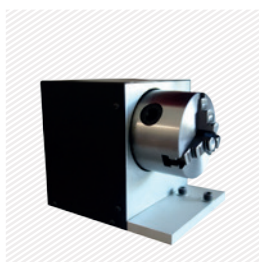


Plate support



Tag feeder



Datamatrix reader



Wireless barcode reader



Maintenance kit



Wide range of stylus



Starting cycle pedal

Please consult us if a specific configuration is not published in the table attached. SIC Marking designs customized and turnkey solutions for all industrial sectors. Our design offices produce machines in compliance with your specifications and your industrial standards.

# E10 CONTROL UNIT

## The e10 controller

- Color screen
- USB Port: to easily upload / download your marking files
- Fully programmable
- Standalone (no PC needed)
- Membrane protected industrial Keyboard
- IP40 waterproof box (no opening or fan)



+ Multiple connectivities



+ Color screen



+ USB Port

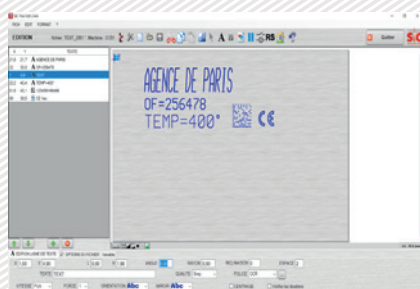


## Technical & electronic features

| e10 Controller        |  | Communication                 |  |
|-----------------------|--|-------------------------------|--|
| Dimensions            | 322 x 380 x 112 mm - 13.7 x 15 x 4.4 in  | Communication ports           | RS232, RS422, USB, RS485 Profibus, TCP/IP, Ethernet/IP         |
| Weight                | 5 kg - 11lbs                             | Inputs-outputs                | 8/8  |
| LCD screen resolution | 480 x 272 pixels                         | External keyboard input       | USB  |
| Keyboard              | Qwerty integrated, protected by membrane | PC software                   | Creation of marking files, transfer controller / PC or USB key |
| Power                 | 300 Watt                                 | Optional communication cards: |  |
| Power supply          | Single phase, 85 to 260 VAC, 50 to 60 Hz | Ethernet TCP                  |  |
| Controlled axes       | 2 (optional 3rd / 4th axis card)         | EtherNet/IP                   |  |
| Operating temperature | From 5 to 40°C                           | PROFINET                      |  |
|                       |  | PROFIBUS                      |  |

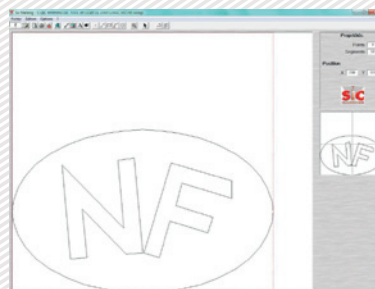
## PC UTILITIES

### File editor



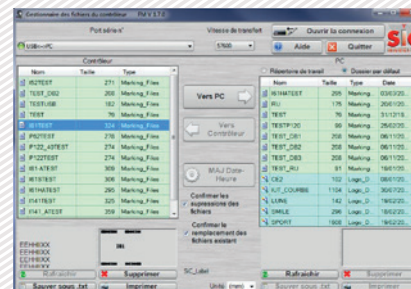
+ Creation or modification of files on PC.

### Creation of logos



+ Creation of vector and matrix logos.

### Creation of logos



+ Backup and file transfer utility.



# E10 RANGE SOFTWARE

## Software features

|                         |  |
|-------------------------|--|
| Text function           | Incrementation, date codes                               |
| Logos                   | Download from a PC or USB key                            |
| Datamatrix              | Up to 348 characters, 48 x 48 dots                       |
| Fonts                   | Arial, Comic, Comic_B, Courier, OCR, OCR_BOLD, OCRA, 4x6 |
| Style                   | Angular, Radial, Inverse, and Mirror                     |
| Character Size          | From 0,1 mm to 99 mm (limited following marking window)  |
| Depth                   | Up to 0,3 mm (according to the material)                 |
| Resolution Between Dots | 0,05 mm MAX  |
| Password                | 2 security levels  |
| History function        | Exportable Excel file                                    |
| Help with maintenance   | Auto diagnosis   |
| Available languages     | 17   |



Graphic view



Edit menu

| AFFECTATION DES I/O |           |          |
|---------------------|-----------|----------|
| Num                 | Entrée    | Sortie   |
| 1                   | ARRET     | Cycle    |
| 2                   | DEPART    | Dernier  |
| 3                   | Sel. Fich | Erreur   |
| 4                   | Sel. Fich | Pause    |
| 5                   | Sel. Fich | Prêt     |
| 6                   | Sel. Fich | PasPièce |
| 7                   | Sel. Fich | Pièce    |
| 8                   | Sel. Fich | Usure    |

| STATISTIQUES CONTROLEUR |       |                 |   |
|-------------------------|-------|-----------------|---|
| Déplacements            |       | Mémoire         |   |
| 0 Cycles                |       | 33 Fichiers     |   |
| 0 Caractères            |       | 17959 o. Utili. |   |
| AXE X                   | 0.0 m | 46409 o. Libres |   |
| AXE Y                   | 0.0 m | 27 % Utilisées  |   |
| AXE Z Num.              | 0.0 m |                 |   |
| Impacts                 |       |                 |   |
| F1:                     | 0     | F4:             | 0 |
| F2:                     | 0     | F5:             | 0 |
| F3:                     | 0     | F6:             | 0 |
|                         |       | F7:             | 0 |
|                         |       | F8:             | 0 |
|                         |       | F9:             | 0 |

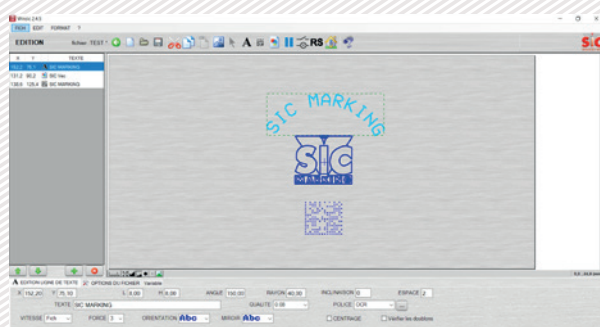
PC software for directly controlling the marking machine.

Available functions:

- Editing of marking files
- Input / output management
- History function and anti duplicates
- Datamatrix ECC200 and UID
- ...

# OPTIONAL WINSIC SOFTWARE

WINSIC is a PC software for direct control of the marking machine.



+ Built-in logo design utility

+ Database Management (Excel, Access, txt)

+ Insertion of background images

