

INTELLIGENT MARKING SYSTEM

e-smart



THE FIRST MACHINE THAT INTEGRATES ITS CONTROLLER!

+ ALL IN 1

- Autonomous stand-alone machine
- Plug & Play

+ SIMPLE USE

- Marking file creation: user-friendly programming on PC
- Quick Start

+ COMPACT SYSTEM

- Integrated electronics
- Space saving in electrical cabinets



E-SMART CHARACTERISTICS

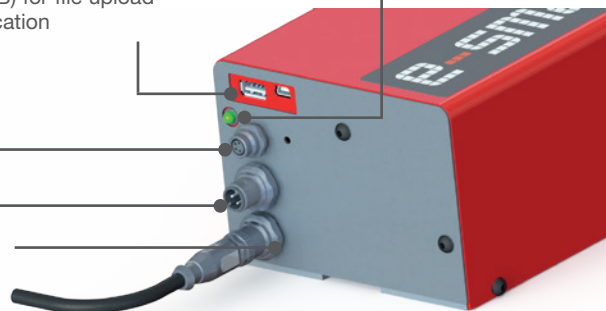


SUITABLE FOR MARKING
2D CODES

USB (A type/Mini B) for file upload and PC communication

LED for status information

RS232 (M8)
Power supply (M12)
Input / Output (M12)

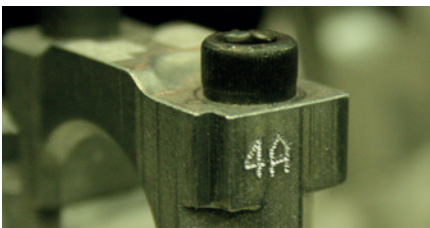


+ All cables supplied

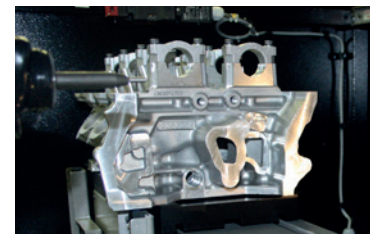
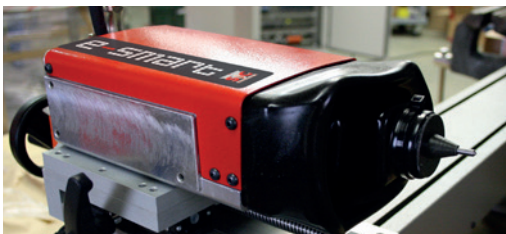
+ Start & Stop Button Box with 4-File Selector (optional)



DOT PEEN MARKING EXAMPLES

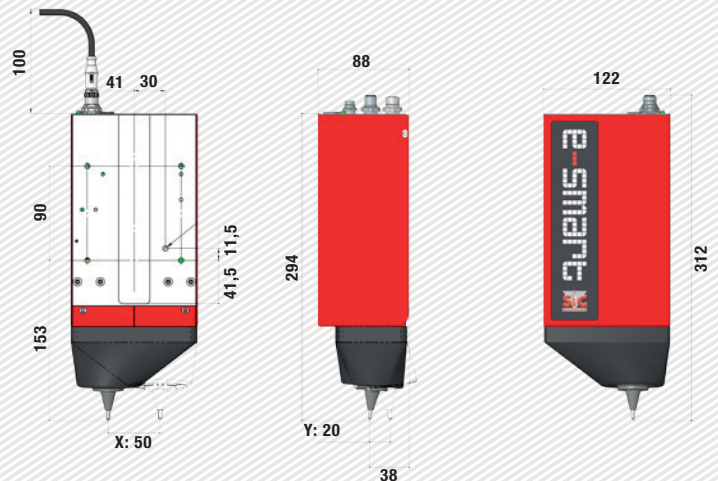


APPLICATIONS



TECHNICAL & MECHANICAL FEATURES

e-smart	
Marking window	50 x 20 mm - 2 x 0.8 in
External dimensions	312 x 122 x 88 mm - 12.3 x 4.8 x 3.5 in
Weight	3,5 kg - 6.6 lbs
Stylus	60 mm - 2.4 in (80 mm - 3.1 in optional)
Connection cable	5 m - 16.4 ft (10 - 32.8 ft optional)
Protection	Leather Bellows
Inputs / Outputs	7E / 3S
Communication Ports	USB / RS232
Power supply cable	Provided
Button box	Optional

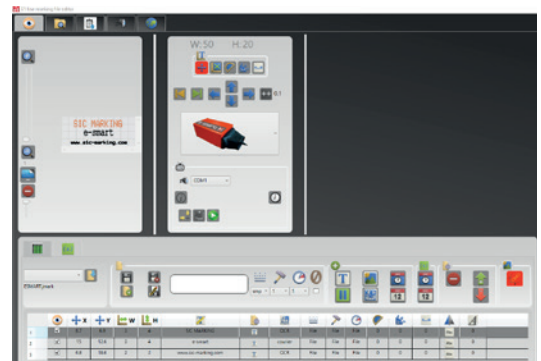


E-SMART PC SOFTWARE

Software features:

Memory	>100 Mo
Variable	Alphanumeric, incrementation, timestamp, barcode
Logos	Download from a PC or USB key
Fonts	Arial, Comic, Comic_B, Courier, OCR, OCR_BOLD, OCRA, 4x6
Style	Angular, radiant, linear, radial, datamatrix, logo
Character Size	From 1 mm to 20 mm (limited following marking window)
Impact Force	9 adjustable levels
Depth	Up to 0,3 mm (according to the material)
Resolution between dots	0,05 mm MAX
Password	1 security level
File selection	31 out of 5 entries
Inputs	Start Stop
Output	Current marking / Controller ready / Default
Communication	RS232

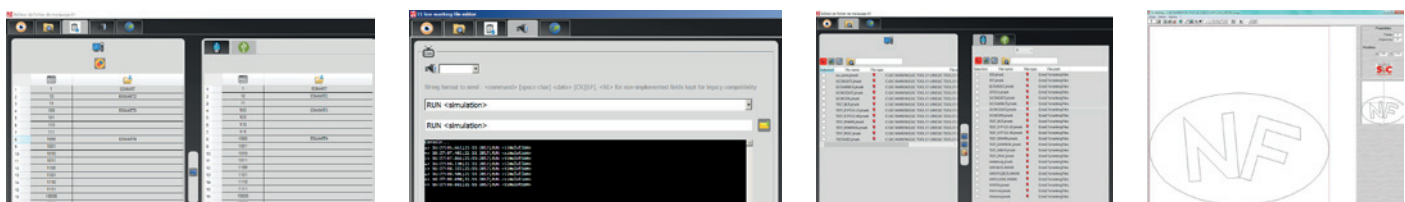
File editor:



- + Stand-alone Mode
- + Live Mode for file creation
- + Different functions available: increments, timestamps, text variables...



PC UTILITIES



- + Assigning file names to be selected according to the input combinations.
- + Simulates sending frames according to the SIC protocol.
- + Backup and transfer of files (by USB key or by USB link).
- + Creation of vector and matrix logos.