



## XXL-BOX MODULAR LASER MARKING WORKSTATION



The personalised answer for your marking needs.

[sic-marking.com](http://sic-marking.com)

# THE MARKING STATION ADAPTED TO YOUR NEEDS

## CLASS LEADING CAPACITY IN 3 DIFFERENT WIDTHS

The XXL-Box Laser Marking Station is particularly suitable for marking large parts. Available in 3 sizes (800, 1200 and 1600 mm wide) it offers you the possibility to mark parts up to 520 mm high and 820 mm deep. All this for a reduced floor space requirement.

With these leading working capacities, the XXL-Box Laser Station is an exciting addition to our standard product range and becomes the most competitive solution for marking large components.



«The most competitive solution for marking large components.»



# MANY ACCESSORIES & OPTIONS FOR A TOTAL MODULARITY

SIC MARKING offers a wide range of accessories and options for complete modularity. The XXL-Box allows you to meet all your needs, from the simplest to the most complex. For example, an automatic or manual drawer is available to facilitate the handling of heavy parts. But also, different D-axis, adaptable to all types of parts. Or, GANTRY axis which make up the latest generation machines.

## DRAWER



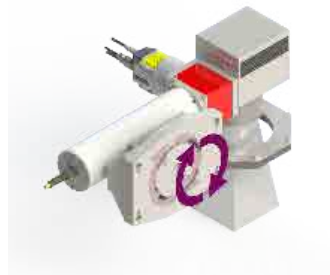
## D AXIS



## GANTRY AXIS



Standard or custom Human/Machine Interface



Variable head orientation

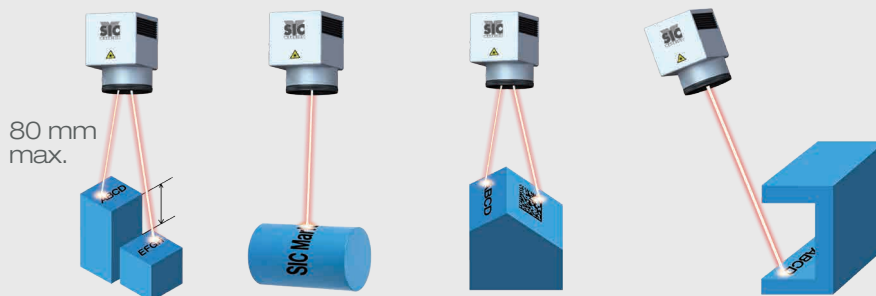


Extraction and filtration systems

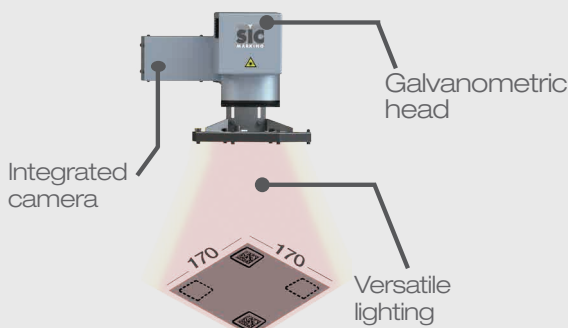


Tag feeder

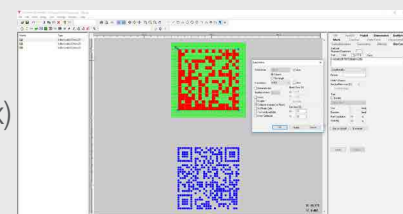
## 3D MARKING



Marking of one or several parts on different height levels.  
Marking on cylinders (without turning the part), inclined planes and difficult to access parts.



Reading & grading of several 2D codes (QR-Code, Datamatrix) in a large marking window (170 x 170).  
Reading possible in the entire marking window.



## Integrated vision

# FLEXIBILITY

## ROBOT MODE

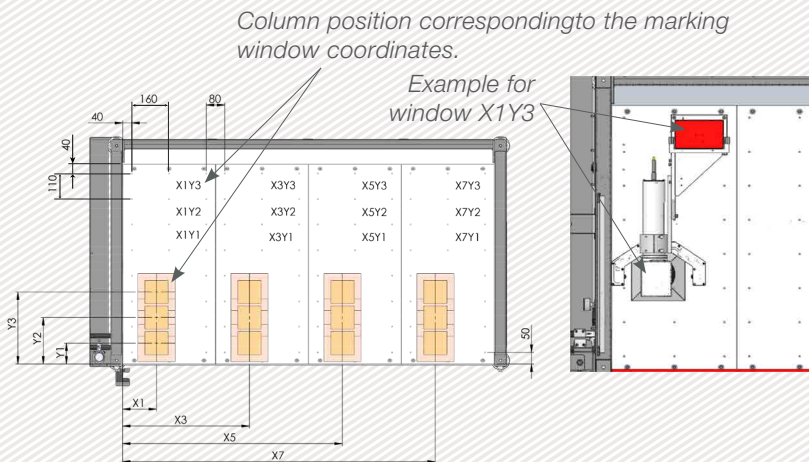


The great flexibility of the XXL-Box Laser Marking Station allows it to be fully controllable by the automation of a robotised cell as well as by a latest generation COBOT.

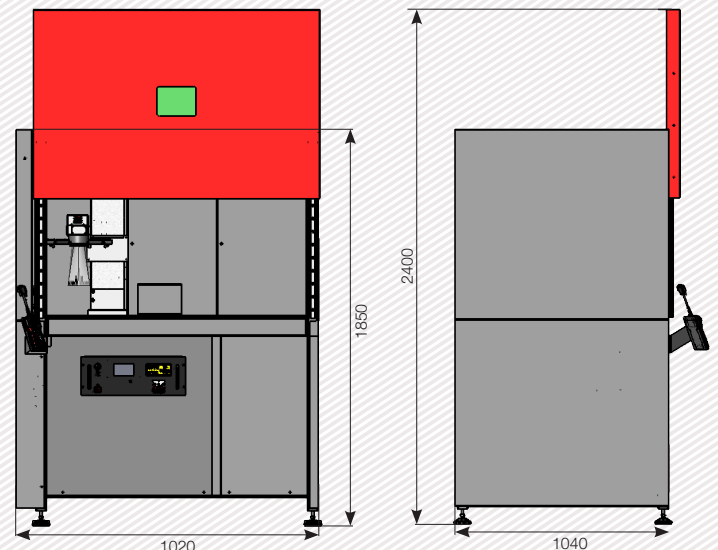
# MECHANICAL FEATURES

XXL-BOX	
Marking window	<input type="checkbox"/> 60*mm <input type="checkbox"/> 100 mm <input type="checkbox"/> 170 mm <input type="checkbox"/> 220*mm <input type="checkbox"/> 300*mm (*contact us)
External dimensions	1020** x 1040 x 1850 mm
Marked parts Dimensions	Max height: 520 mm
Security	Class 1 security laser (EN 60825-1 standard) / PL-e ranking (ISO 13849-1)
Side hatch	Yes

\*\* Modular with: 1020, 1420 ou 1820 mm

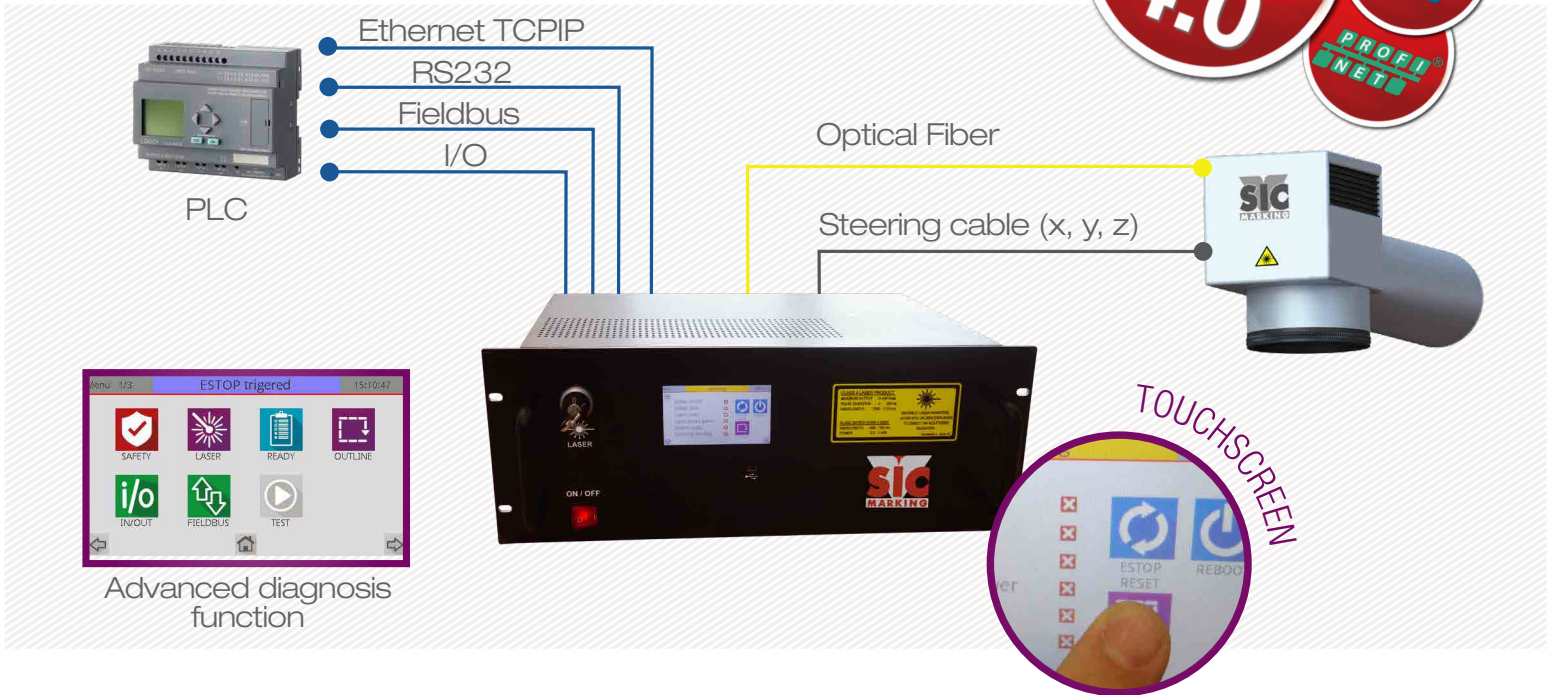


	Y1	Y2	Y3	X1	X3	X5	X7
XXL-Box 800	95	205	315	146	546	X	X
XXL-Box 1200	95	205	315	146	546	946	X
XXL-Box 1600	95	205	315	146	546	946	1346



# LASER, A MASTERED TECHNOLOGY

## OUR CONTROL UNIT



## OUR FIBER LASER RANGE

### Easy 20-30W

Excellent value for money  
Marking on all types of materials and difficult surface conditions

VERSATILITY

### Easy 50W

Deep marking  
Ultra fast marking

HIGH POWER

### HD 20W

Multi material (ideal for aluminums and plastics...)  
Reduced cycle time

HIGH CONTRAST



GREAT VALUE FOR MONEY



EASE OF USE AND INTEGRATION



ROBUSTNESS AND RELIABILITY



VERSATILITY

# A TAILOR-MADE RESPONSE TO YOUR MARKING PROJECTS

## COMPLETE TURNKEY WORKSTATIONS

With an experienced, responsive and dedicated team, SIC Marking designs customised, turnkey solutions for all industrial sectors. Our design office produces machines in compliance with your specifications and your industrial standards.

We make changes to our standard workstations (re-sizing, adding movements...) or create specific systems to meet your specifications.

Automatic ceiling axis

Custom Tag feeder



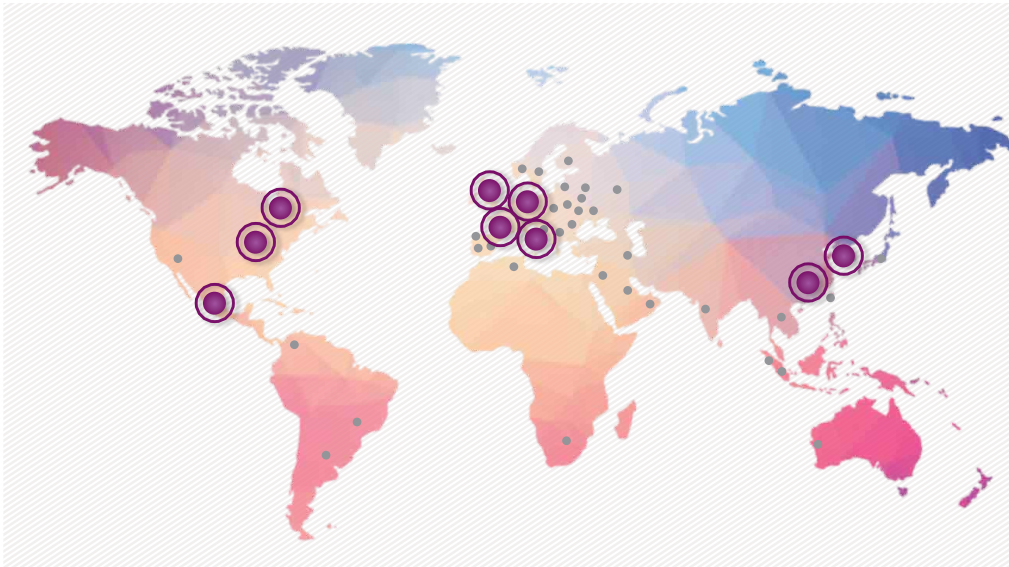
«Our expertise center supports you in all your projects.»

Vertical D axis

Cross table

# AT YOUR SERVICE

## SUPPORTING YOU ALL OVER THE WORLD



Locations in Germany, Italy, the UK, Canada, USA, Mexico, China, South Korea and a network of over 40 distributors...

## OUR CENTRES OF EXCELLENCE

We spend around 10% per year of turnover in R&D to develop new products in order to make our customers more competitive. Today SIC Marking offers the widest and most up to date range of products which runs from standard products to custom solutions.

We have a dedicated supply chain for our custom solutions including a laboratory, design office, production workshop and a project management team. This enables us to define both the best

technical solutions for our customers specific needs and to ensure a precise project follow-up for a smooth, quality on-time delivery.

We have more than 100 trained technicians around the world ready to support our customers during the entire product and/or solution life cycle: from commissioning and training to maintenance, supply of spare parts, repairs, upgrades and telephone helpline.





**SIC MARKING, a global leader in  
marking and traceability solutions.**

**SIC Marking France  
Global Headquarters**

195 Rue des Vergers  
69480 Pommiers  
France  
Tel: +33 (0) 472 54 80 00  
info@sic-marking.com

**SIC Marking UK**

B1 Harris Road,  
Wedgnock Industrial Estate,  
Warwick, CV34 5JU  
England  
Tel: +44 (0) 1926 830372

**SIC Marking China**

No. 601, No. 4 Building, No. 258  
Jinzang Rd. Shanghai  
Shanghai 201206  
China  
Tel: +86 (0) 21 6164 5600  
*Offices also in Haerbin, Beijing, Wuhan,  
Chongqing and Guangzhou.*

**SIC Marking Germany**

Borner Str. 31  
42897 Remscheid  
Germany  
Tel: +49 (0) 2191 46240-0

**SIC Marking Italy**

Via Collamarini 9  
40138 Bologna  
Italy  
Tel: +39 (0) 51 6027811

**SIC Zaniboni**

Via Roberto Incerti 2/A  
10069 Villar Perosa  
Italy  
Tel: +39 (0) 12 1515868

**SIC Marking Canada**

35-2, rue De Lauzon  
Boucherville Qc J4B 1E7  
Canada  
Tel: + 1 450 449 9133

**SIC Marking USA**

137 Delta Drive  
Pittsburgh, PA 15238  
USA  
Tel: + 1 (877) 742 9133  
*Offices also in Tempe, AZ.*

**SIC Marking Mexico**

Canada #129  
Parque Industrial Unidad Nacional  
Santa Catarina, N.L CP 66350  
Mexico  
Tel: +52 (81) 8676 3383  
*Offices also in Mexico City.*

**SIC Marking Korea**

Office # 707, Banpo Technopia,  
186, Galmachi-ro, Jungwon-gu,  
13230 Seongnam-si, Gyeonggi-do,  
South Korea  
Tel: +82 31 731 8400

**sic-marking.com**