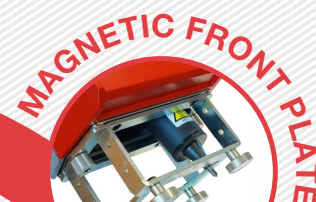


DOT PEEN PORTABLE MARKING SYSTEM E-TOUCH



- + Colour touch screen.
- + User-friendly icon-based programming.
- + 1:1 scale marking visualization.
- + Can be used with or without gloves.



3 FRONT PLATES AVAILABLE



FUNCTIONAL

Interchangeable front plate thanks to a new magnet system.

ROBUST



Internal metal structure for greater strength and rigidity.

LIGHT



Among the lightest on the market with less than 2kg. Very compact thanks to the integrated controller.

FULL PACKAGE

- + Transport suitcase
- + Maintenance kit
- + Accessories and operating instructions



MARKING EXAMPLES



TECHNICAL & MECHANICAL FEATURES

	e-touch
Marking window	60 x 25 mm
External dimensions	210 x 125 x 220 mm
Weight	1,9 kg
Stylus	Tungsten carbide
Cable length	5 m



E-TOUCH SPECIFICITIES

Marking configurations

LARGE FRONT PLATE

FLAT PART MARKING

ADJUSTABLE REDUCED FRONT PLATE

SMALL PART MARKING

CYLINDER

MARKING IN A HOLLOW

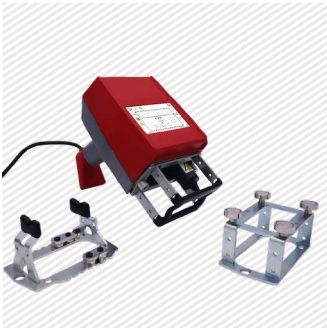
MAGNETIC FRONT PLATE

STEEL PART MARKING

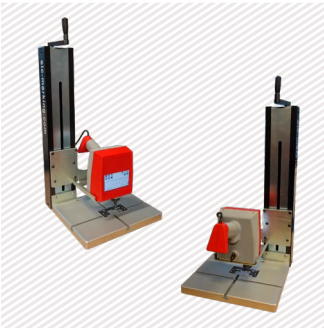
OPTIONS



Barcode reader (wireless)



3 front plates kit



Reversible column base (with screen orientation change for better use)

- + 1D / 2D reader (wireless)
- + Custom front plate realization
- + Maintenance kit
- + Hook and balancing system

E1 CONTROL UNIT



- + User-friendly 2 hand icon based programming



- + Colour touch screen with 1:1 scale viewing window



- + USB port, allows easy marking files transfer

- + Variety of markings (DataMatrix, circular, alphanumeric, logos...)

- + Reduced space requirement

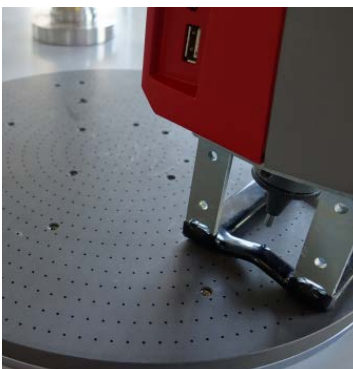
- + Fully programmable



Technical & electronic features

E1 control unit	
LCD screen	HD colour, 95 x 55 mm
Screen orientation change	Yes - adaptation to different column applications
Keyboard	Touch screen
Power	100 Watt
Power supply	18V / 3A
Inputs/Outputs	Jack socket
PC software	Creation, backup and transfer of logo files

APPLICATIONS



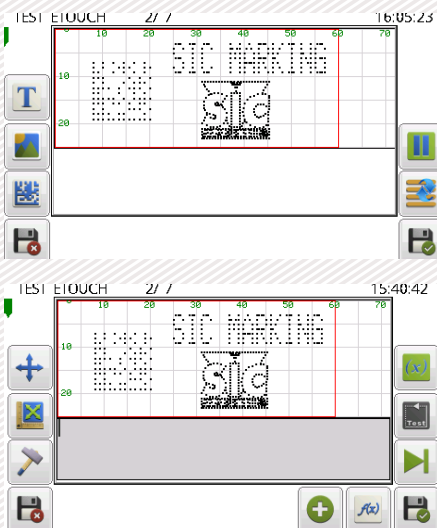
E1 RANGE SOFTWARE

Software features

Memory	>100 Mo
Variable	Alphanumeric, incrementation, timestamp, barcode
Logos	Download from a PC or USB key
Fonts	Arial, Comic, Comic_B, Courier, OCR, OCR_BOLD, OCRA, 4x6
Language	17 available including Russian
Style	Angular, radiant, linear, radial, datamatrix, logo
Character Size	From 1 mm to 60 mm (limited following marking window)
Impact Force	9 adjustable levels
Depth	Up to 0,3 mm (according to the material)
Resolution Between Dots	variable, 0,22 mm MAX
Password	2 security levels

Icon programming

Graphic View



- + Ergonomics and quick programming
- + History function with anti-duplicate
- + Automatic or semi-automatic mode using barcode reading



 Angular marking



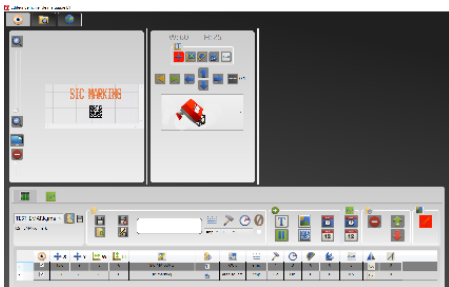
 Radiant marking



 Variable text or increment

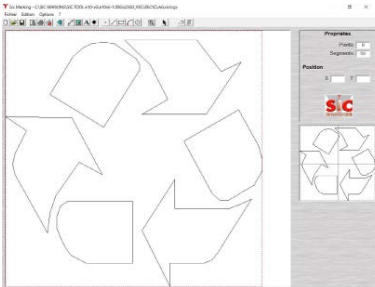
PC UTILITIES

File editor



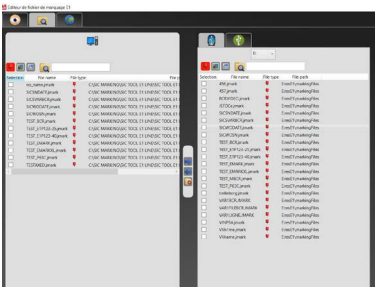
- + Creation or modification of files on PC.

Creation of logos



- + Creation of vector and matrix logos.

File manager



- + Backup and transfer of files (by USB key or by USB link).